

Models: 792SD, 794SD**Ball-Plex™ Carbon Steel Screwed End
Duplex Strainers
Sizes: 3/4" - 3" (20 - 80mm)****Pressure/Temperature - Non-Shock**

Model	Material	Rating
792SD	Carbon	285psi @ -20 to 100°F
	Steel	19.65 bar @ 37.78°C
		260psi @ 200°F 17.93 bar @ 93.33°C
794SD	Carbon	740psi @ -20 to 100°F
	Steel	51.02 bar @ 37.78°C
		680psi @ 200°F 46.88 bar @ 93.33°C

Max. temp. can be limited by gasket and seat material. Consult factory.

792SD **Class 150**
794SD **Class 300**



Model 792SD

⚠ WARNING

Bolted Covers required above 150 psi or 200°F.

Strainers provide economical protection for costly pumps, meters, valves, and other similar mechanical equipment by straining foreign matter from the connected piping system. Installation of a strainer before mechanical equipment can ensure trouble free service and avoid costly shutdowns for repair or replacement of equipment damaged by foreign matter. The size of the perforation or mesh in the basket screen will determine the smallest particles captured. See Strainer Information section of the Mueller Steam Specialty Engineering binder for detailed information including sizes and materials available.

Typical Service

- Duplex Strainers are designed for use in fluid handling systems where the flow cannot be shut down for basket cleaning.
- Typical services include cooling water, compressors, condensers, fire lines, fuel lines, lubrication systems, salt and fresh water systems, chemical process systems, pump suction service, and more.
- Consider strainer body and screen material as well as gasket and seat materials for suitability for particular service.

Features

- Ball-Plex™ Duplex Strainers use 3-way balls as the diverter valves
- Balls are 316SS for corrosion resistance, strength, and resistance to build-up of solids on the balls' surfaces.
- PTFE seats provide bubble-tight sealing, superior to metal seats in other designs. This eliminates potentially dangerous leakage into the chamber being cleaned.
- Two part body casting allows true and easy in-line service
- After removal of the cover and basket, all working parts are easily accessible even with the unit in line.
- The handle covers the pressurized chamber. This prevents accidental opening of the pressurized chamber, and allows easy access to the chamber to be cleaned.

Baskets

- Large open area ratios ensure minimum pressure drop across the unit.
- See the Technical Data Section of the Mueller Steam Specialty Engineering binder for Pressure Drop Charts.

MODEL	SIZES	STANDARD (WATER)	
		MATERIAL	OPENING
792SD, 794SD	3/4" - 3"	304SS	.062 perf.

Job Name _____

Contractor _____

Job Location _____

Approval _____

Engineer _____

Contractor's P.O. No. _____

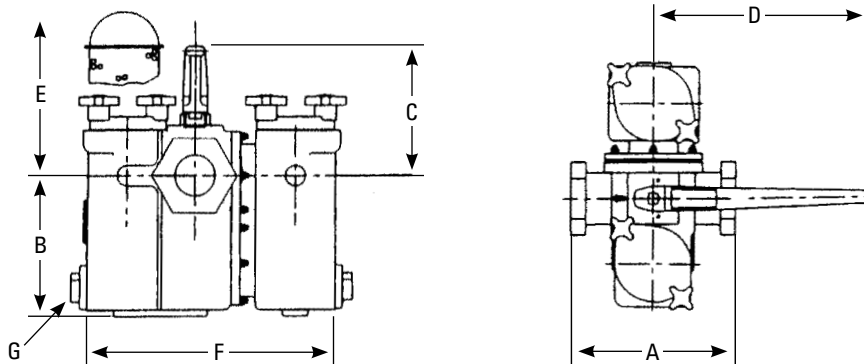
Approval _____

Representative _____

Material

	792SD, 794SD
Body	Carbon Steel, ASTM A216-WCB
Cover/Cap	Carbon Steel
Seats	PTFE
O-Rings	Buna-N

Dimensions and Weights



Models 792SD, 794SD

SIZE				DIMENSIONS										WEIGHT			
		A		B		C		D		E Screen Removal		F		G (NPT)			
in.	mm	in.	mm	in.	mm	in.	mm	in.	mm	in.	mm	in.	mm	in.	mm	lbs.	kgs.
¾	20	5½	140	4⅞	125	4⅞	118	10	254	7¾	197	10⅜	259	¾	20	32	14.5
1	25	5½	140	4⅞	125	4⅞	118	10	254	7¾	197	10⅜	259	¾	20	32	14.5
1¼	32	7½	191	6¾	171	4⅜	111	10	254	10⅝	264	12¾	324	1¼	32	58	26.3
1½	40	7½	191	6¾	171	4⅜	111	10	254	10⅝	264	12¾	324	1¼	32	57	25.8
2	50	10	254	8⅜	208	7⅞	181	20	508	12⅝	321	16⅜	416	1¼	32	115	52.1
2½	65	11½	292	12	309	8⅞	205	20	508	17⅞	449	20⅝	518	1½	40	198	89.7
3	80	11½	292	12	309	8⅞	205	20	508	17⅞	449	20⅝	518	1½	40	198	89.7

Apply for Certified Drawings

Mueller Steam Specialty product specifications in U.S. customary units and metric are approximate and are provided for reference only. For precise measurements, please contact Mueller Steam Specialty Technical Service. Mueller Steam Specialty reserves the right to change or modify product design, construction, specifications, or materials without prior notice and without incurring any obligation to make such changes and modifications on Mueller Steam Specialty products previously or subsequently sold.



A Watts Water Technologies Company

USA: Tel: (800) 334-6259 • Fax: (800) 421-6772 • MuellerSteam.com
 Latin America: Tel: (52) 81-1001-8600 • Fax: (52) 81-8000-7091 • MuellerSteam.com