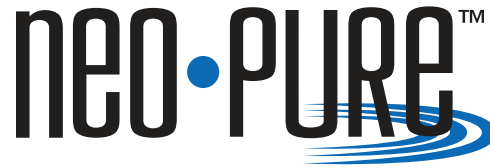


Multi-Cartridge Filter Housings

36 and 52 Round Series



Applications

- Chemicals
- Cooling Tower Filtration
- Desalination Prefiltration
- Electronics
- Food and Beverage
- Oil / Gas
- Paints / Inks / Coatings
- Paper and Pulp
- Power
- Water



Residential/Commercial/Industrial Filtration Applications

Standard Features

- Manufactured in the USA
- Holds 36 or 52 cartridges to service a wide range of high flow rates
- Heavy-duty 304L or 316L stainless steel construction with swing bolt closure and lifting davit for maximum durability
- Swing bolt closures for quick and easy cartridge change-outs and secure sealing
- Top spring seals allow for variable length cartridges
- Flange inlet and outlet connections allow for easy piping and drain connections permit quick evacuation of housing
- Universal seal cups and compression plates accept DOE and 222/FLAT or FIN cartridges – standard on all filter housings
- 1/4" gauge port on body – standard on all filter housings

Product Specifications

Maximum Operating Pressure

150 psig (10.3 bar) @ 300° F (149° C) - Standard

250 psig (17.2 bar) @ 300° F (149° C) - Optional

Connections

Inlet/Outlet: 6" RF Flanges

Optional: RF flanges, sanitary ferrules, MNPT, FNPT, BSP or grooved fittings

Drain Ports: 3/4" FNPT

Vent Ports: 1/2" FNPT

Materials of Construction

Head/Shell/Connections: 304L or 316L stainless steel

Closure: Swing bolts – zinc plated steel

Vent and Drain Plugs: 304L or 316L stainless steel

Mounting Legs: 304L stainless steel

Gaskets

Standard: Buna N (FDA grade)

Optional: EPR, silicone, Teflon encapsulated silicone, Viton

Finish

Poly-coat on exterior surfaces

Optional: 3M™ coating, electropolish, glass bead or passivate

Cartridge Type

DOE style cartridges (maximum 2-5/6" diameter) OR 222/FLAT or FIN cartridges – standard on all filter housings.

For 2-3/4" diameter cartridges, order as 32 round or 50 round housings

Custom Options

See ordering guide for complete selection of options

MODEL	QUANTITY (LENGTH) OF CARTRIDGES +	RATED FLOW CAPACITY* GPM (LPM)	INLET/ OUTLET (PIPE SIZE)	MAXIMUM DIAMETER CARTRIDGE						
					A	B	C	D	E	F
SBM36X3**	36 (30")	540 (2044)	6"	2-5/8" **	64-3/4" (164.5 cm)	32-3/8" (82.2 cm)	14" (35.6 cm)	5-9/16" (14.1 cm)	25-7/8" (65.7 cm)	25" (63.5 cm)
SBM36X4**	36 (40")	720 (2725)	6"	2-5/8" **	74-3/4" (189.9 cm)	32-3/8" (82.2 cm)	14" (35.6 cm)	5-9/16" (14.1 cm)	25-7/8" (65.7 cm)	25" (63.5 cm)
SBM52X3	52 (30")	780 (2952)	6"	2-5/8" **	65-15/16" (167.5 cm)	32-3/8" (82.2 cm)	14" (35.6 cm)	5-9/16" (14.1 cm)	29-7/8" (75.9 cm)	29" (66.0 cm)
SBM52X4	52 (40")	1040 (3937)	6"	2-5/8" **	75-15/16" (192.9 cm)	32-3/8" (82.2 cm)	14" (35.6 cm)	5-9/16" (14.1 cm)	29-7/8" (75.9 cm)	29" (66.0 cm)

+ Housings will accept cartridge lengths: 30" = (29-1/4" or 30") and 40" = (39" or 40")

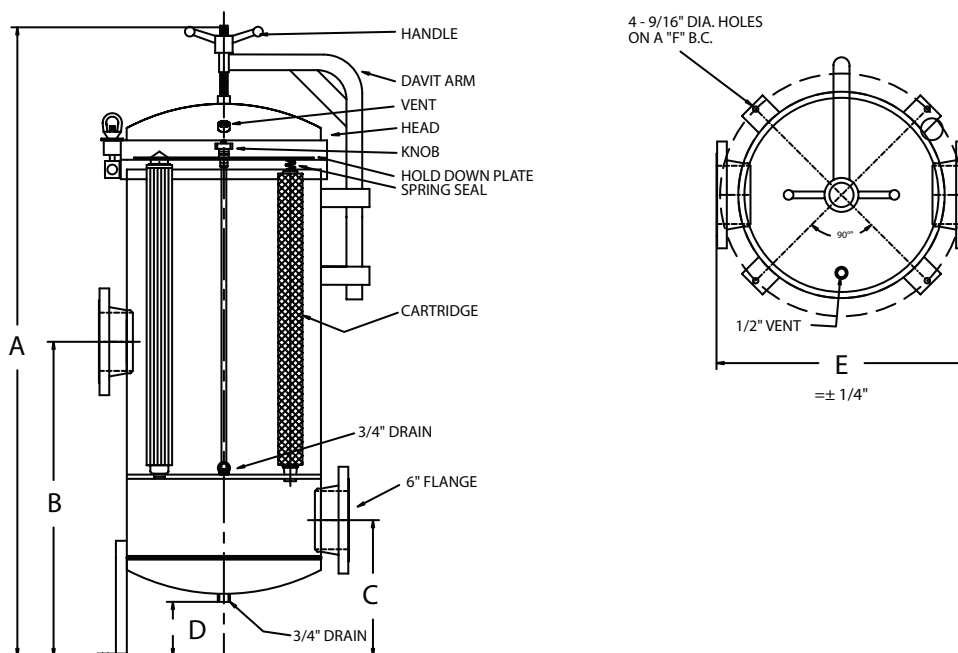
* Based upon 7 gpm per 10" length with a 25 micron wound cartridge at 2 PSID clean and viscosity of 1 cps. Flow rates are for guidelines only.

Actual flow rates are based on fluid, viscosity, cartridge type, micron ratings and other factors.

** When using 222 or 226 connectors with 2-3/4" OD filter cartridges in an SBM36 housing, you must change to a SBM32 housing (32 round)

When using 222 or 226 connectors with 2-3/4" OD filter cartridges in a SBM52 housing, you must change to a SBM50 housing (50 round)

Dimensions



Ordering Guide (Example: SBM36X3-316L-226-2-FC-PG-E)

MODEL	CARTRIDGE LENGTH	MATERIAL /FINISH	CARTRIDGE CONFIGURATION	INLET/ OUTLET	CONNECTION TYPE	OPTIONS	GASKET
SBM36X = 36 cartridges SBM52X = 52 cartridges (Swing Bolt Closure)	1 = 10", 9-7/8", 9-3/4" 2 = 20", 19-1/2" 3 = 30", 20-1/4" 4 = 40"	Blank = 304L (Standard) 316L = 316L 304LC = 304L Coated 316LC = 316L Coated 304LEP = 304L Electropolished 316LEP = 316L Electropolished 304LGB = 304L Glass Bead	Blank = DOE (Standard) 226 = 226 Fin/ Flat	6 = 6" (Standard) 8 = 8"	FL = Flange (Standard) TC = Ferrules GF = Grooved Fittings	Blank = Mounting Legs, Gauge Ports (Standard) PG = Pressure Gauges (2) P = Passivate U = ASME Code "U" Stamp NS = Built to ASME Code/no Stamp HP = High Pressure (up to 250psi)	Blank = Buna N (Standard) E = EPR S = Silicone V = Viton T = Teflon Encapsulated Silicone



Authorized MAHLE-Nowata Distributor & Representative

For pricing and information please call
Commercial Filtration Supply at (855)-236-0467

Visit us Online at: www.commercialfiltrationsupply.com
for more filtration products.