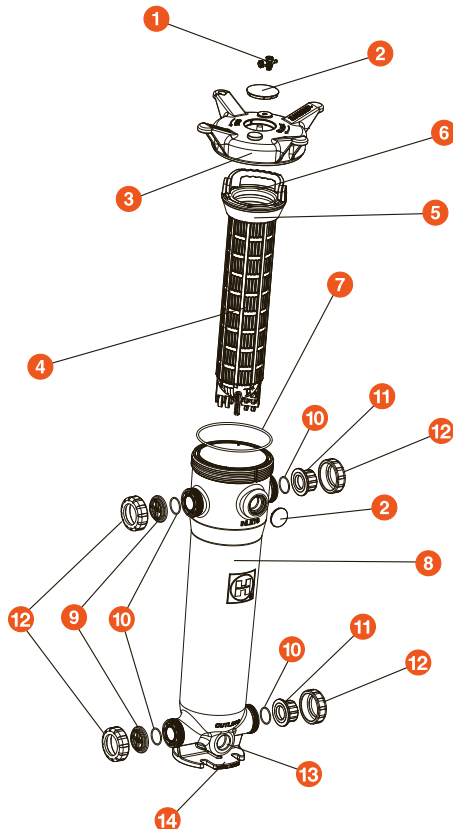




EXPLODED VIEW



FLV Series Simplex Bag Filters

DOUBLE LENGTH – 32" GFPP
1-1/4" TO 2" PIPE SIZES

KEY FEATURES

- Platinum Glass Filled Polypropylene
- One-Piece Injection Molded Construction
- Hand Removable, Ergonomic Cover with Liquid Displacing Dome
- Vent Valve Included on Cover
- Rated up to 100 GPM
- True Union Socket, Threaded or Flanged End Connections
- In-Line or Loop Flow Configurations
- Solid Basket
- Drain Port at Bottom
- Integral Mounting Base
- Easier Installations Due to True Union Connectivity
- Vertical Flow Flutes in Basket, No Bag Snag and More Flow Area

OPTIONS

- Gauge with Gauge Guard
- Pressure Differential Gauge and Switch
- EPDM O-Ring Seals
- Cartridge Adapters
- Hinged Basket
- 316 Stainless Steel Basket

MATERIALS

- GFPP per ASTM D4101, Cell Class 85580
- FPM Standard O-Ring Seals

TECHNICAL INFORMATION

SELECTION CHART

| SIZE / BODY MATERIAL | END CONNECTIONS | PIPING SIZES | O-RING SEALS | PRESSURE RATING |
|-----------------------------------|--------------------------------|---------------------------------------|--------------|-----------------------------|
| Double Length 7" x 32" GFPP | GFPP (Threaded and Flanged) | 1-1/4" – 2"/32-50 rated @ 100 GPM* | FPM or EPDM | 150 PSI @ 70°F Non-Shock |
| | PVC (Socket) | | | |
| | CPVC (Socket) | | | |

* May be Limited by Pipe Size or Bag Choice

FLV Series Simplex Bag Filters

DOUBLE LENGTH – 32" GFPP

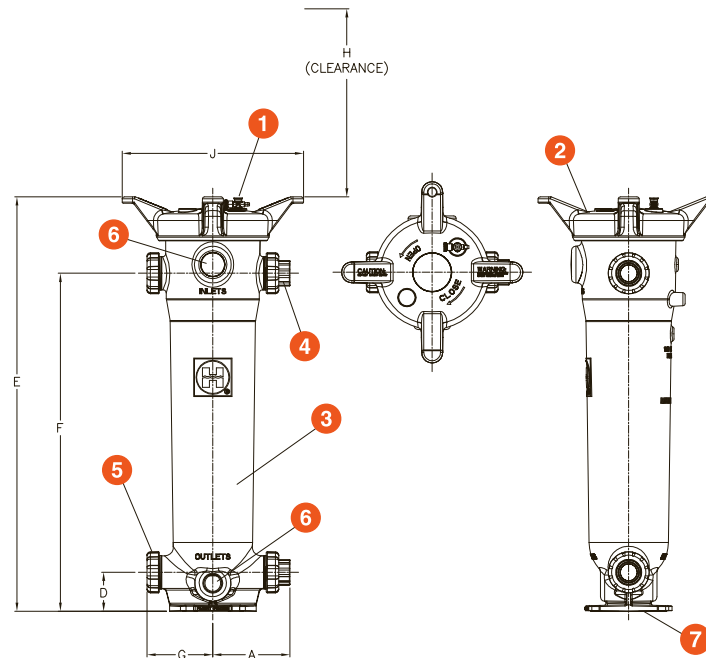
1-1/4" TO 2" PIPE SIZES

TECHNICAL INFORMATION, CONTINUED

PARTS LIST*

1. Vent Valve (Included)
2. Cover
3. Filter Body
4. End Connector
5. Assembly Nut
6. Alternate 2" NPT Ports
7. Integrally Molded Mounting Pad

* See page 8 for a complete Parts List



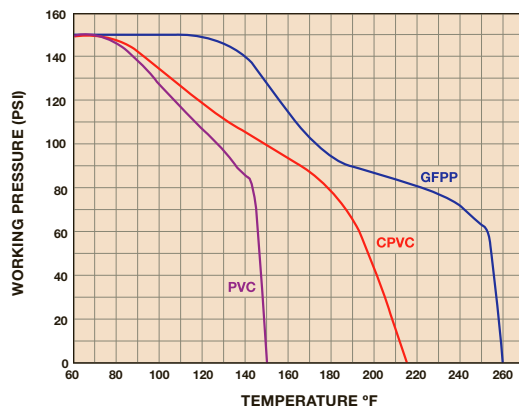
DIMENSIONS

| FILTER SIZE in / DN | A in / mm | D in / mm | E in / mm | F in / mm | G in / mm | H* in / mm | J in / mm |
|------------------------|--------------|--------------|--------------|--------------|--------------|---------------|--------------|
| 1-1/4" / 32 | 8.86 / 225 | 4.50 / 114 | 47.83 / 1215 | 39.00 / 991 | 7.60 / 193 | 31.25 / 794 | 20.93 / 532 |
| 1-1/2" / 40 | 8.86 / 225 | 4.50 / 114 | 47.83 / 1215 | 39.00 / 991 | 7.60 / 193 | 31.25 / 794 | 20.93 / 532 |
| 2" / 50 | 8.91 / 226 | 4.50 / 114 | 47.83 / 1215 | 39.00 / 991 | 7.60 / 193 | 31.25 / 794 | 20.93 / 532 |

Dimensions are subject to change without notice – consult factory for installation information

* Clearance from top for basket removal

OPERATING TEMPERATURE / PRESSURE SPECIFICATIONS



Material of Construction: GFPP

Inlet Connections: GFPP (Threaded and Flanged)
PVC (Socket)
CPVC (Socket)

Outlet Connections: GFPP (Threaded and Flanged)
PVC (Socket)
CPVC (Socket)

Bag Size: Bag Size #2: 7" x 32"

Pressure Rating: 150 PSI @ 70°F Non-Shock

O-Ring Seals: FPM or EPDM

Bag Ratings: 1, 5, 10, 25, 50, 100, 150, 200, 400, 600 and 800 Microns

Flow Rate: 100 GPM (May be Limited by Pipe Size or Bag Choice)

Weight: 64.1 lbs.



Authorized Eaton Filtration Distributor & Representative

For pricing and information please call
Commercial Filtration Supply at (855)-236-0467

Visit us Online at: www.commercialfiltrationsupply.com