



## FLV Series Duplex Bag Filters

DOUBLE LENGTH – 32" GFPP  
2" TO 4" PIPE SIZES

### KEY FEATURES

- Platinum Glass Filled Polypropylene
- One-Piece Injection Molded Construction
- Hand Removable, Ergonomic Cover with Liquid Displacing Dome
- Vent Valve Included on Cover
- Rated up to 100 GPM – 2"
- Rated up to 150 GPM – 3" to 4"
- True Union Socket, Threaded or Flanged End Connections
- In-Line or Loop Flow Configurations
- Solid Basket
- Drain Port at Bottom
- Integral Mounting Base
- Easier Installations Due to True Union Connectivity
- Vertical Flow Flutes in Basket, No Bag Snag and More Flow Area

### OPTIONS

- Gauge with Gauge Guard
- Pressure Differential Gauge and Switch
- EPDM O-Ring Seals
- Cartridge Adapters
- Hinged Basket
- 316 Stainless Steel Basket

### MATERIALS

- CPVC per ASTM D1784, Cell Class 23447
- GFPP per ASTM D4101, Cell Class 85580
- FPM Standard O-Ring Seals



Authorized Eaton Filtration Distributor & Representative

For pricing and information please call  
Commercial Filtration Supply at (855)-236-0467

Visit us Online at: [www.commercialfiltrationsupply.com](http://www.commercialfiltrationsupply.com)  
for more filtration products.

## TECHNICAL INFORMATION

### SELECTION CHART

SIZE / BODY MATERIAL	END CONNECTIONS	PIPING SIZES	O-RING SEALS	PRESSURE RATING
Double Length 7" x 32"	CPVC (Socket, Threaded or Flanged)	2"/50 rated @ 100 GPM*	FPM or EPDM	150 PSI @ 70°F Non-Shock
GFPP	GFPP (Threaded and Flanged)	3" – 4"/80-100 rated @ 150 GPM*		

\* May be Limited by Pipe Size or Bag Choice

# FLV Series Duplex Bag Filters

DOUBLE LENGTH – 32" GFPP

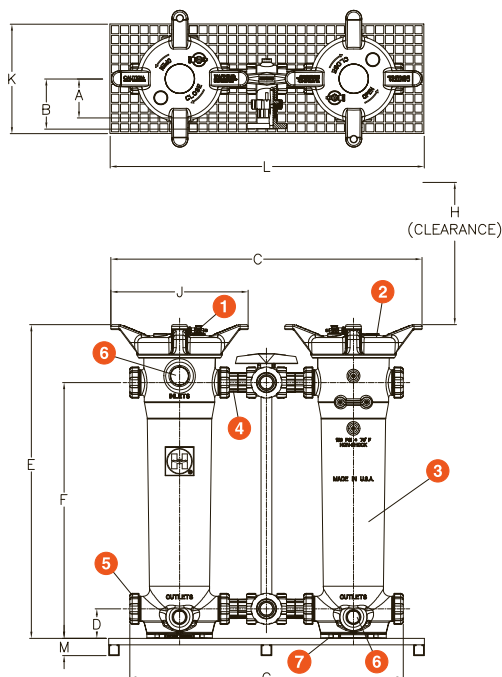
2" TO 4" PIPE SIZES

## TECHNICAL INFORMATION, CONTINUED

### PARTS LIST\*

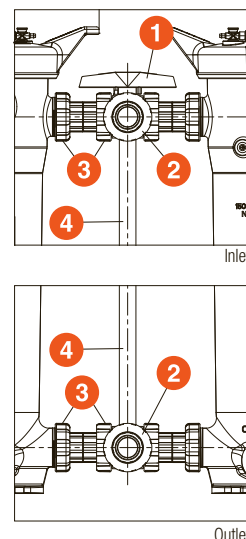
1. Vent Valve (Included)
2. Cover
3. Filter Body
4. End Connector
5. Assembly Nut
6. Alternate 2" NPT Ports
7. Integrally Molded Mounting Pad

\* See page 8 for a complete Parts List



### PIPING PARTS LIST

1. Handle
2. Hayward® LA Series Three-Way Lateral Valve
3. Spool Assembly (Each Side)
4. Stem Extension Pipe



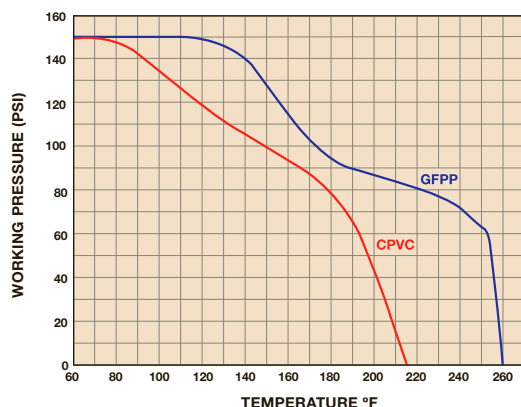
### DIMENSIONS

FILTER SIZE	A	B	C	D	E	F	G	H*	J	K	L	M
in / DN	in / mm	in / mm	in / mm	in / mm	in / mm	in / mm	in / mm	in / mm	in / mm	in / mm	in / mm	in / mm
2" / 50	6.00 / 152	7.77 / 197	47.44 / 1205	4.50 / 114	47.83 / 1215	39.00 / 991	41.70 / 1059	31.25 / 794	20.93 / 532	16.75 / 425	48.00 / 1219	2.62 / 67
3" / 80	7.60 / 193	9.85 / 205	55.17 / 1401	4.50 / 114	47.83 / 1215	39.00 / 991	50.99 / 1295	31.25 / 794	20.93 / 532	16.75 / 425	48.00 / 1219	2.62 / 67
4" / 100	9.33 / 237	11.76 / 299	55.17 / 1401	4.50 / 114	47.83 / 1215	39.00 / 991	50.99 / 1295	31.25 / 794	20.93 / 532	16.75 / 425	48.00 / 1219	2.62 / 67

Dimensions are subject to change without notice – consult factory for installation information

\* Clearance from top for basket removal

### OPERATING TEMPERATURE / PRESSURE SPECIFICATIONS



- Material of Construction:** GFPP
- Inlet Connections:** GFPP (Threaded and Flanged)  
CPVC (Socket, Threaded or Flanged)
- Outlet Connections:** GFPP (Threaded and Flanged)  
CPVC (Socket, Threaded or Flanged)
- Bag Size:** Bag Size #2: 7" x 32"
- Pressure Rating:** 150 PSI @ 70°F Non-Shock
- O-Ring Seals:** FPM or EPDM
- Bag Ratings:** 1, 5, 10, 25, 50, 100, 150, 200, 400, 600 and 800 Microns
- Maximum Flow Rates:** 100 GPM – 2"  
(May be Limited by Pipe Size or Bag Choice)  
150 GPM – 3" to 4"  
(May be Limited by Pipe Size or Bag Choice)
- Mounting Base:** Fiberglass
- Hardware:** Stainless Steel
- Weight:** up to 2" – 132.0 lbs. / 3" to 4" – 145.0 lbs.