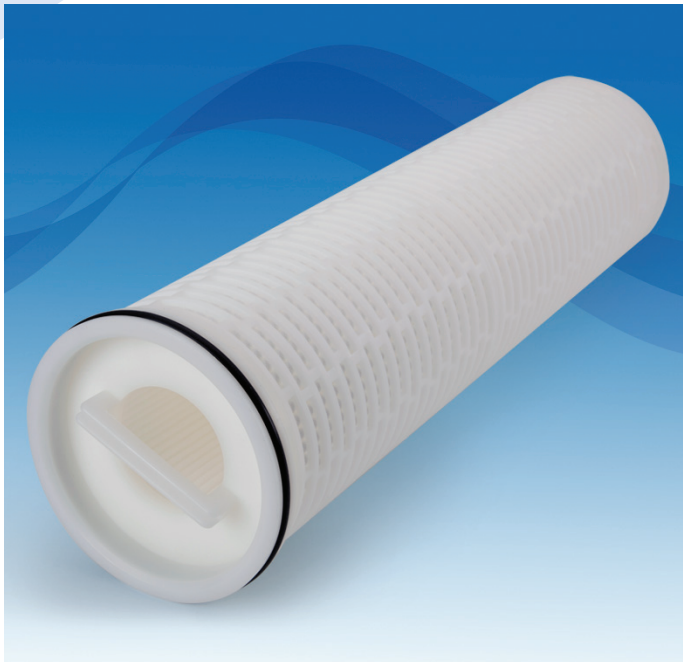


HFC Series

High Flow Cartridge Filters



Request a Quote Today!



- Shelco's High Flow Cartridges are designed for industrial and commercial filtration at an economic price and an exceptional value
- All Polypropylene construction
- 98% retention ratings from .5 to 70 microns
- Heavy-duty outer cage replaces costly stainless steel support basket
- Handle provides fast and easy push / pull installation
- O-ring seal on cartridge eliminates bypass
- Inside out flow retains contaminant during change out
- Multi-layer pleated media designed for high flow and long service life
- Thermally bonded construction
- FDA listed materials – All materials comply with FDA Title 21 of the Code of Federal Regulations Sections 174.5 and 177.1520, as applicable for food and beverage contact
- Retrofits competitive high flow filter housings

Applications

Water	Desalination	RO Systems	Food & Beverage	Chemicals
Coolants	Electronics	Power	Sea Water	Waste Water

Specifications & Operating Parameters

Pore Sizes

0.5, 1, 3, 5, 10, 20, 50, 70 micron

Filter Removal Efficiency

Micron	98%	90%
0.5 Micron	0.5	0.3
1.0 Micron	1.0	0.6
3.0 Micron	3.0	1.5
5.0 Micron	5.0	3.0
10 Micron	10	7.0
20 Micron	20	14
50 Micron	50	20
70 Micron	70	45

Dimensions Nominal

Length: 20" (50.8 cm), 40" (101.6 cm), 60" (152.4)

Outside Diameter: 6" Cage (15.2cm)

Surface area: 20" Length: 24 ft² (2.23 m²)

40" Length: 49 ft² (4.55 m²)

60" Length: 74 ft² (6.87 m²)

Materials of Construction

Filter Media: Polypropylene

End Caps: Polypropylene

Cage: Polypropylene

Gaskets: EPDM standard

Optional: Buna-N, Viton, Silicone

Operating Parameters

Maximum Operating Temperature: 170°F @ 20 psid (77°C @ 1.4 bar)

155°F @ 25 psid (68°C @ 1.7 bar)

77°F @ 30 psid (25°C @ 2.1 bar)

Recommended Changeout

Differential Pressure: 20–25 psid (1.4–1.7 bar)

Maximum Flow Rates*

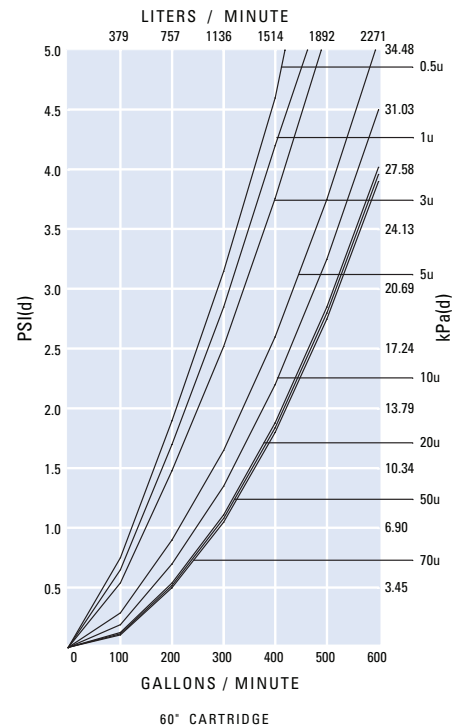
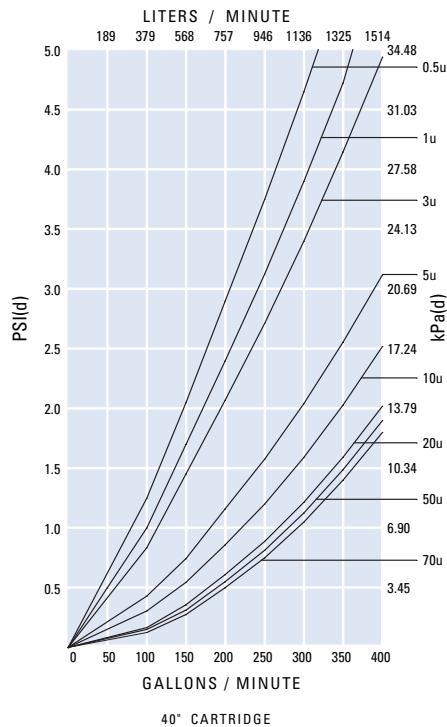
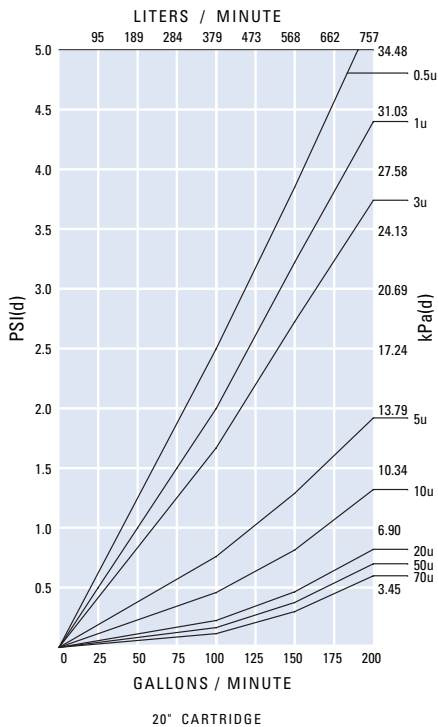
20" element up to 175 GPM (662 L/min)

40" element up to 350 GPM (1325 L/min)

60" element up to 500 GPM (1892 L/min)

**Consult the factory for sizing assistance based on your application and particle loads.*

Flow vs Pressure Drop

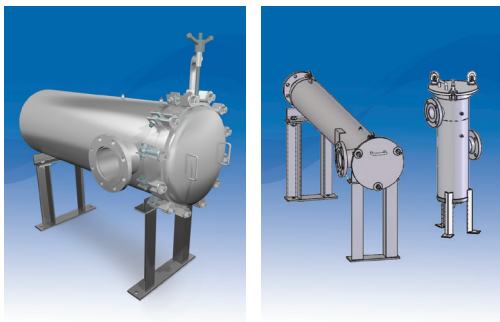


Ordering Guide (Example: HFC5-60P-E)

HFC	5	-	60	P	-	E
SERIES	MICRON		LENGTH	MATERIAL		GASKET/O-RING
HFC	0.5 1 3 5 10 20 50 70		20" 40" 60"	P = Polypropylene		E = EPR (Standard) B = Buna N V = Viton S = Silicone

Customization

Housings may be customized to meet your precise requirements. Contact Shelco's technical support staff or your distributor for more information.



Filter Housings

Shelco manufactures a full line of filter housings. From our rugged single cartridge housings to our heavy duty multi-cartridge housings and bag filter housings, Shelco is the perfect choice for your filtration solutions.

**COMMERCIAL
FILTRATION SUPPLY**

Authorized MAHLE-Nowata Distributor & Representative

For pricing and information please call
Commercial Filtration Supply at **(855)-236-0467**

Visit us Online at: www.commercialfiltrationsupply.com
for more filtration products.