

# MAHLE

Industry

## Gas Filter Housings Nowata GR Series

Reverse Flow, Wet Gas Coalescer

### Request a Quote Today!

#### 1. Introduction

The GR series reverse flow, wet gas coalescer removes compressor oil, trace hydrocarbons and water. It is not intended to remove particles or large amounts of water. This coalescer contains a large bottom sump area for the collected liquids, as well as a standard upper chamber sump.

GR series housings are configured vertically regardless of flow rate to utilize gravitational liquid removal benefits. These housings can be customized to customer specs including automation which is available for monitoring and dumping of collected liquids.

The standard cartridge used with this filter housing is the high efficiency, Nowata NFF series, 0.3 micron or 0.1 micron, absolute rated, filter cartridge. These NFF series cartridges are designed to coalesce extremely fine liquid aerosols, including lubricating oil downstream of a compressor, in reverse flow (inside out) applications. Extremely durable, these cartridges can withstand over 75 psi differential pressure in either direction.

#### Features

- All units are built to ASME Code. Optional U code stamp is available
- Pressure to 275 psi at 140 °F
- Higher psi vessels are available upon request
- 1/8 inch corrosion allowance
- Uses the absolute rated, Nowata NFF series, 0.3 micron or 0.1 micron, vapor phase cartridge elements
- Includes two-stage construction with cartridge filtration
- Carbon steel construction, other materials are available
- Housings can be designed to customer specifications
- Can be customized with instrumentation and automation



## 2. Dimensional Information

Model Number	Cartridge Qty & Type	A	B	C	D	E	F	G	H	Inlet/Outlet Size
GRAC1C27F2CAN	(1) NFF12R	48-3/4	19	41	23-5/8	6-7/16	18-5/8	6-5/8	14	2
GRAC1C27F2CCN	(1) NFF24R	60-3/4	19	53	23-5/8	6-7/16	18-5/8	6-5/8	26	2
GRAC1C27F2CDN	(1) NFF36R	72-3/4	19	65	23-5/8	6-7/16	18-5/8	6-5/8	38	2
GRAC2C27F3CDN	(2) NFF36R	76-3/4	20	69	27-5/8	7-7/8	20-5/8	8-5/8	38	3
GRAC3C27F3CDN	(3) NFF36R	78-3/4	22	71	29-5/8	9-3/8	22-3/4	10-3/4	38	3

Dimensions shown in inches unless otherwise noted. Dimensions are approximate values and not intended for piping specifications. Due to our continuing program of product improvement, specifications are for reference only and subject to change without notice.

### NOTES:

G = Outside diameter of housing

H = Required clearance for cartridge removal

Inlet/Outlet size = Raised face 150# flange (inches)

J = 12 inches

K = 3 inches

L = 2 inches

M = 3-1/2 inches

P = Vent 1/4 inch FNPT

R = 4 Bolt holes, 7/8" diameter on E bolt center

S = Vent 1 inch FNPT (far side)

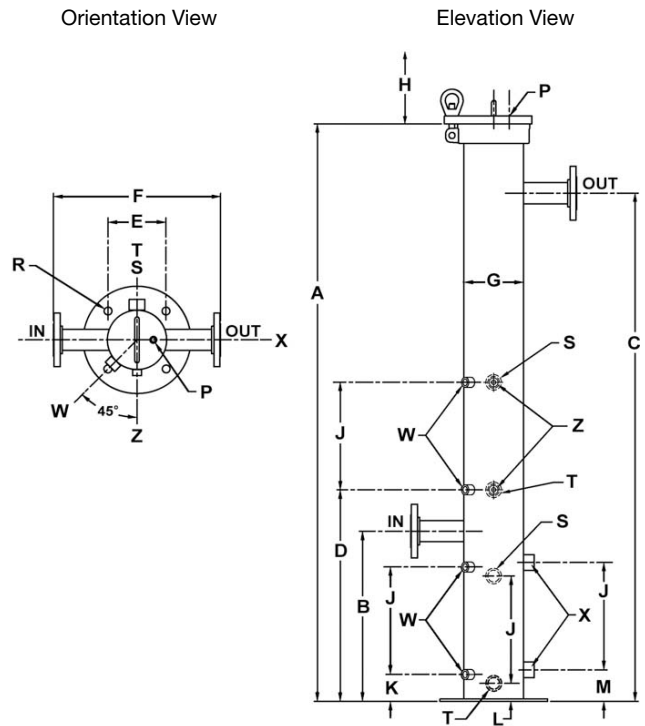
T = Drain 1 inch FNPT (far side)

W = Liquid level gauge 1/2 inch FNPT

X = High level shut down 1 inch FNPT

Z = Differential pressure gauge 1/4 inch FNPT

Housings can be customized to meet customer specification. Contact factory for details



## 3. Typical Model Number

G	R	A	C	1	C	27	F	2	C	A	N
Housing Series	Process Configuration	Closure Style*	Housing Material*	Qty of Elements	Code	Pressure Rating*	Inlet/Outlet Style*	Inlet/Outlet Size*	Internal Material	Internal Cart. Size*	O-Ring Material*
Gas Housings	Reverse Flow Wet Gas	A = Flat top CS B = Domed bar flange top D = RFWN flange top	C = Carbon steel U = 316 Stainless steel W = wetted	Number of cartridge elements	C = ASME U stamp N = Non-code	15 = 150 psi 27 = 275 psi 30 = 300 psi 74 = 740 psi 1440 = 1440 psi	F = RFSO L = RFLWN N = FNPT W = RFWN	2 = 2" 3 = 3" 4 = 4" 8 = 8" More sizes avail.	C = Carbon steel U = 316 Stainless steel	3.5" OD by length A = 12" C = 24" D = 36" E = 72"	N = Buna-N E = EPDM V = Viton S = TES T = TEV



Authorized MAHLE-Nowata Distributor & Representative

For pricing and information please call  
Commercial Filtration Supply at (855)-236-0467

Visit us Online at: [www.commercialfiltrationsupply.com](http://www.commercialfiltrationsupply.com)  
for more filtration products.